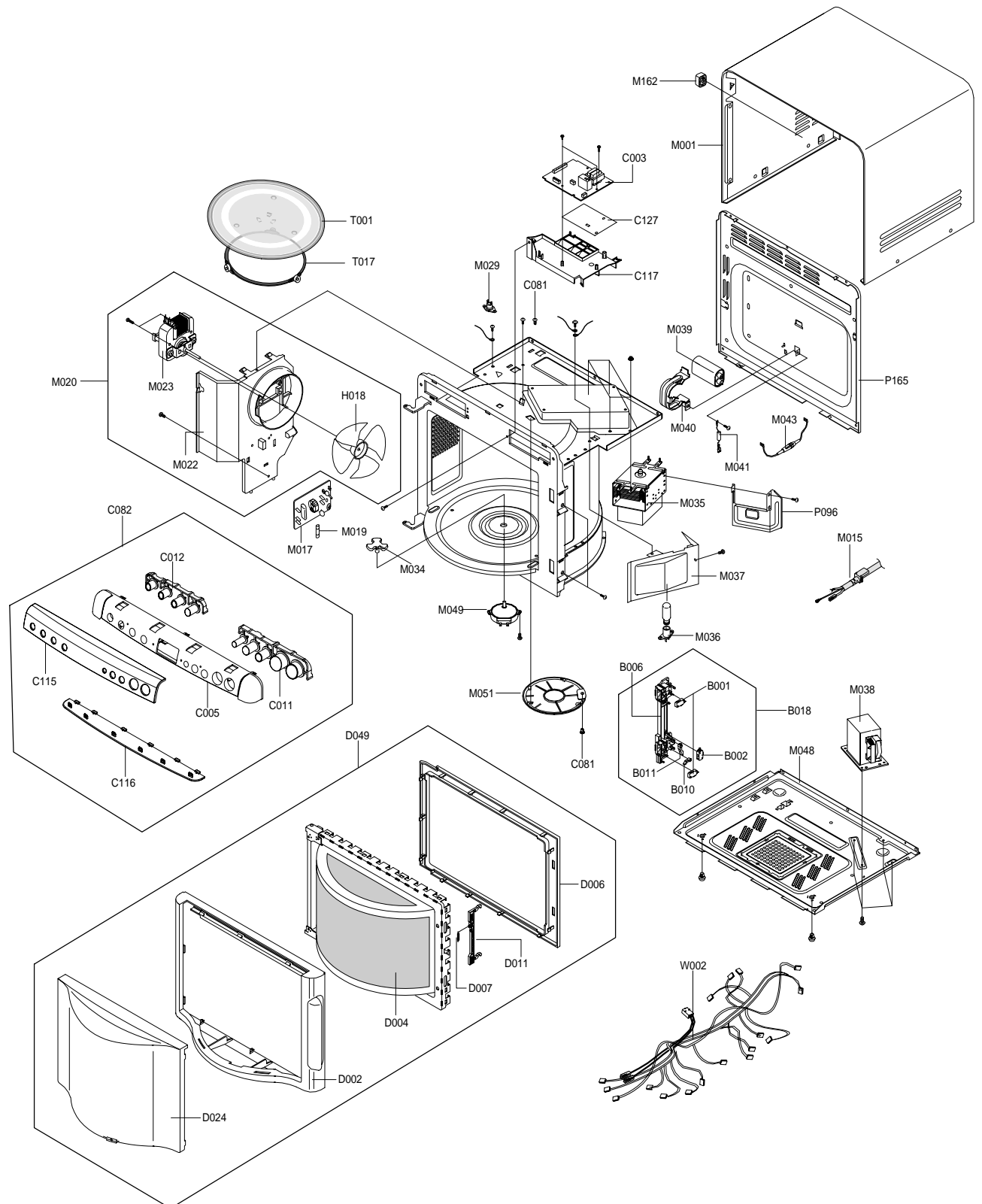


7. Exploded Views and Parts List

7-1 Exploded Views



7-2 Main Parts List

No.	Code No.	Description	Specification	Q'ty	Remark
B001	3405-001034	SWITCH-MICRO	125/250VAC,16A,200GF,SPST-N	2	LATCH(UPPER/
B002	3405-001033	SWITCH-MICRO	125/250VAC,16A,200GF,SPST-N	1	LATCH(MIDDLE
B006	DE66-00132A	LATCH-BODY	MW8ROWC,POM,T2.0,ROUND-MWO,-,	1	
B010	DE66-00093A	LEVER-SWITCH(A)	NC2000,PP(TH53),-, -, -, -	1	
B011	DE66-00094A	LEVER-SWITCH(B)	NC2000,PP(TH53),-, -, -, -	1	
B018	DE96-00257A	ASSY BODY LATCH	MW8ROWC,ROUND-MWO,0.8CUF	1	
C081	DE66-20095B	BUTTON-LOCK	-, -, OTR5, -, -, TB53)	1	C/UPPER + CO
H018	DE31-90054A	BLADE-FAN	PP, -, 100MM,JE320WA/GA, -, -, -	1	
M001	DE64-00889C	PANEL-OUTER	MR87/MR89,C/STEEL,T0.5,W406.	1	WHITE/XEC
M001	DE64-00889B	PANEL-OUTER	MR87/MR89,C/STEEL,TO.5,W406.	1	SILVER/XEC
M001	DE64-00889B	PANEL-OUTER	MR89/MR89,C/STEEL,TO.5,W406.	1	SILVER/XET
M015	DE39-00224A	ASSY POWER CORD	M308, -, KDK-4819D,250V6A,	1	
M017	DE96-00010C	ASSY NOISE FILTER	SN-3WED(12),250V12A,EU	1	
M019	3601-001019	FUSE-CARTEIDGE	250V,12A,SLOW-BLOW,CERAMI	1	
M020	DE96-00334A	ASSY-MOTOR FAN	SMF-800EA,230V/50Hz,2380,	1	
M022	DE63-00238A	COVER-BLOWER	MD800WC/XAA,PP(TB53,A353),-	1	
M023	DE31-10177G	MOTOR FAN	SMF-800EA,MR87, -, 50Hz, -, 230V,2	1	
M029	DE47-20173A	THERMOSTAT	PW-2N(90/60)30,187Y,250V7.5A,	1	
M034	DE67-00180A	COUPLER	MW8ROWC,PPS,ROUND-MWO, -, -, -	1	
M035	DE03-00009A	MAGNETRON	2M244-M12E,1KW/2460MHZ,3.15V/4	1	
M036	4713-001031	LAMP-INCANDESCENT	230V,173mA,40W,ORG, -, -, -	1	
M037	DE63-00194A	COVER-AIR	MW8ROWC,SECC,T0.4, -, -, -, -, RO	1	
M038	DE26-00105A	TRANS H.V	SHV-ER80A,230V,50Hz,2210V,3.28	1	
M039	2501-001011	C-OIL	910nF,2100V,BK,54x35x75mm,20mm	1	
M040	DE61-00521A	BRACKET-HVC	MW8ROWC,SECC,T0.6, -, -, -, ROUN	1	
M041	0402-001554	DIODE-RECTIFIER	HV03-12T01,12000V,0.4A,,	1	
M043	DE91-70061J	ASSY-H.V.FUSE	THV060T-0650-H,5KV0.65A,WL	1	
M048	DE61-00520B	BASE-PLATE(COATING)	MD800WC,EPOXY, -, -, -, -	1	
M048	DE61-00520A	BASE-PLATE	MW8ROWC,SGCC1,T0.6,W405.1,L29	1	
M049	DE31-10154A	MOTOR SYNCHRONOUS	M2HJ49ZR02,ST-16,50/60	1	
M051	DE63-00195A	COVER-MGT	MW8ROWC,PP(TB53)-WHT,T2.0,ROUN	1	
M162	DE67-00189A	CAP-SIDE	MD800WC/XAA,ABS, -, -, -, -, -	1	WHITE/XEC
M162	DE67-00189B	CAP-SIDE	MD800SC/XAA,ABS, -, -, -, GRY, -	1	SILVER/XEC
M162	DE67-00189B	CAP-SIDE	MD800SC/XAA,ABS, -, -, -, GRY, -	1	SILVER/XET
P096	DE61-00628A	BRACKET-MGT	MR87ZR/BWT,SECC,T0.5, -, -, -, -	1	
P165	DE97-00437B	ASSY-CAVITY BACK	MR87/MR89,ROUND,0.91UF,	1	
T001	DE74-20015G	TRAY-COOKING	3RD-1.0,T6,1115G,HKS, -, -, -, -	1	
T017	DE97-00401A	ASSY-GUIDE ROLLER	MR80WPC, -, -, -, -	1	
W002	DE96-00332A	ASSY-WIRE HARNESS A	MR87/XEF,CMO	1	

7-3 Control and Door Parts List

No.	Code No.	Description	Specification	Q'ty	Remark
C003	RCS-K2LED1-55	ASSY PCB PARTS	MR87,230V50HZ	1	
C005	DE64-00895B	CONTROL-PANEL(ME)	MR87,ABS,-,-,-,PURE-	1	WHITE/XEC
C005	DE64-00895A	CONTROL-PANEL(ME)	MR87,ABS(HR0370D),T2.0,TACT,SIL	1	SILVER/XEC
C005	DE64-00895A	CONTROL-PANEL(ME)	MR87ABS(HR0370D),T2.0.TACT,SIL	1	SILVER/XET
C011	DE64-00901B	BUTTON-SELECT(A)	MR87,ABS,-,-,PURE-WHT,-	1	WHITE/XEC
C011	DE64-00901A	BUTTON-SELECT(A)	MR87,ABS(HR0370D),SILVER,RO	1	SILVER/XEC
C011	DE64-00901A	BUTTON-SELECT(A)	MR87,ABS(HR0370D)SILVER,RO	1	SILVER/XET
C012	DE64-00902B	BUTTON-SELECT(B)	MR87,ABS,-,-,PURE-WHT,-	1	WHITE/XEC
C012	DE64-00902A	BUTTON-SELECT(B)	MR87,ABS(HR0370D),SILVER,RO	1	SILVER/XEC
C012	DE64-00902A	BUTTON-SELECT(B)	MR87,ABS(HR0370D),SILVER,RO	1	SILVER/XET
C082	-	ASSY CONTROL-BOX	230V/50HZ,MR87,PURE-WHT	1	S.N.A(WHITE/XEC)
C082	-	ASSY CONTROL-BOX	230V/50HZ,MR87,VICTORY-SIL,BASIC	1	S.N.A(SILVER/XEC)
C082	-	ASSY CONTROL-BOX	230V/50HZ,MR87,VICTORY-SIL,BASIC	1	S.N.A(SILVER/XET)
C115	DE64-00896A	CONTROL-PANEL COVER	MR87,SAN,T2.0,SMOG,T	1	
C116	DE64-00899B	DECORATION-COVER(TC)	MR87/MR89,ABS(HG076	1	
C117	DE97-00436B	ASSY-BRACKET PCB	MR87/MR89,-,-,-	1	
C127	DE62-00047A	INSULATION-PAPER	MD800WC/SC,PAPER,T0.23,	1	BKT-PCB
D002	DE64-00890A	DOOR-A	MW8ROWC,ABS(HR0370),T2.0,0.8CUFT,	1	WHITE/XEC
D002	DE64-00890B	DOOR-A	MR87/MR89,ABS,-,-,-,VICTORY-SIL,-	1	SILVER/XEC
D002	DE64-00890B	DOOR-A	MR87/MR89,ABS,-,-,-,VICTORY-SIL	1	SILVER/XET
D004	DE94-00859B	ASSY DOOR-E	MD800WC/XAA,BLK,SPRAY(COATIN	1	
D006	DE64-00892A	DOOR-C	MW8ROWC,PP(TB53),T2.0,0.8CUFT,BLK	1	
D007	DE61-00198A	SPRING-KEY	M1877,HSWR,PI0.7,-,D6,23 1/4,	1	
D011	DE64-00891A	KEY-DOOR	MW8ROWC,POM(F20-02),T2.0,-,BLK,	1	
D024	DE64-00893A	SCREEN-DOOR(B)	MW8ROWC,SAN,SMOG,0.8CUFT,	1	
D049	-	ASSY DOOR	MR87/MR89,PURE-WHT,SAMSUNG	1	S.N.A(WHITE/XEC)
D049	-	ASSY DOOR	MR87/MR89,VICTORY-SIL,SAMSUNG	1	S.N.A(SILVER/XEC)
D049	-	ASSY DOOR	MR87/MR89,VICTORY-SIL,SAMSUNG	1	S.N.A(SILVER/XET)

S.N.A : SERVICE NOT AVAILABLE

7-4 Standard Parts List

Code No.	Description	Specification	Q'ty	Remark
DE60-30015A	NUT-FLANGE	M5,P0.8,MSWR10,FEFZY,-,-,-,-,-	4	MGT
6006-001170	SCREW-ASSY TAPP	WS,TH,+,M4,L10,ZPC(YEL)	1	N/F EARTH
6006-001170	SCREW-ASSY TAPP	WS,TH,+,M4,L10,ZPC(YEL)	1	PCB EARTH
6006-001174	SCREW-ASSY TAPP	WE,TH,+,M4,L12,ZPC(YEL)	5	BASE-PLATE
6006-001174	SCREW-ASSY TAPP	WE,TH,+,M4,L12,ZPC(YEL)	1	BKT-MGT
6006-001174	SCREW-ASSY TAPP	WE,TH,+,M4,L12,ZPC(YEL)	2	BODY-LATCH
6006-001174	SCREW-ASSY TAPP	WE,TH,+,M4,L12,ZPC(YEL)	1	C/BOX
6006-001174	SCREW-ASSY TAPP	WE,TH,+,M4,L12,ZPC(YEL)	3	CAVITY-BACK
6006-001174	SCREW-ASSY TAPP	WE,TH,+,M4,L12,ZPC(YEL)	1	CAVITY-TCO
6006-001174	SCREW-ASSY TAPP	WE,TH,+,M4,L12,ZPC(YEL)	1	COVER-AIR
6006-001174	SCREW-ASSY TAPP	WE,TH,+,M4,L12,ZPC(YEL)	2	COVER-MOTOR
6006-001174	SCREW-ASSY TAPP	WE,TH,+,M4,L12,ZPC(YEL)	1	FRT+BKT-PCB
6006-001174	SCREW-ASSY TAPP	WE,TH,+,M4,L12,ZPC(YEL)	5	PANEL-OUTER
6006-001174	SCREW-ASSY TAPP	WE,TH,+,M4,L12,ZPC(YEL)	1	DOOR-A + SCREEN
6006-001174	SCREW-ASSY TAPP	WE,TH,+,M4,L12,ZPC(YEL)	1	BKT-HVC
6006-001176	SCREW-ASSY TAPT	WT,PH,+,M4,L8,ZPC(YEL)	1	P/C EARTH
6006-001176	SCREW-ASSY TAPT	WT,PH,+,M4,L8,ZPC(YEL)	1	-
6002-000495	SCREW-TAPPING	TH,+,2S,M4,L12,ZPC(WHT),SWRCH18A,-	4	OUTER-PANEL
6002-000635	SCREW-TAPPING	PH,+,2S,M4,L8,ZPC(YEL),SWRCH18	1	T/T-MO
6002-001318	SCREW-TAPPING	PH,+,2S,M3,L30,ZPC(YEL)	1	BKT-PCB
6002-000630	SCREW-TAPPING	PH,+,2S,M3,L8,ZPC(YEL),SWRCH18	6	ASSY-PCB
6002-000630	SCREW-TAPPING	PH,+,2S,M3,L8,ZPC(YEL),SWRCH18	2	-
DE60-10080A	SCREW-WASHER	-,-,-,-,M5,L12,-,2S,-,-	4	HVT